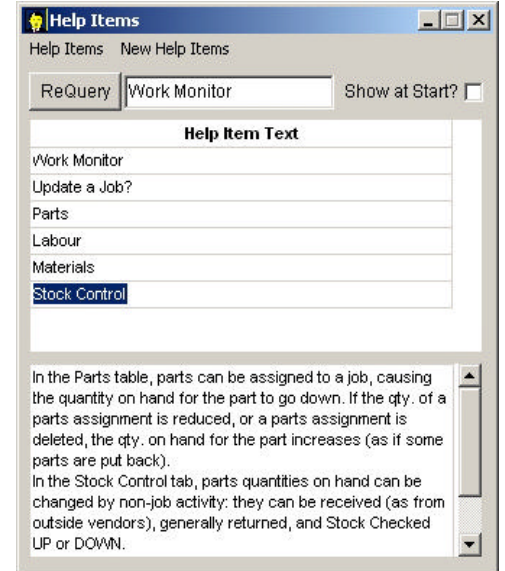


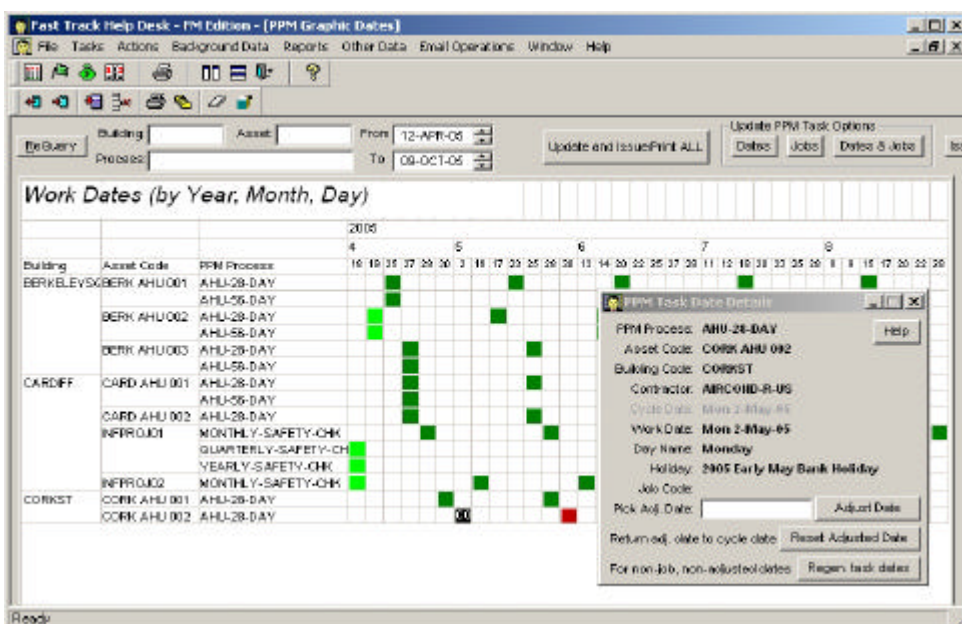
Fast Track Maintenance

Fast Track PPM is a fully-featured and scalable computerised maintenance management system.

- Schedule maintenance, service and inspection tasks in seconds
- Centrally manage and issue work orders
- Save costs and reduce the time staff spend using software
- Provide a faster and improved customer service
- Reduce errors
- Powerful reporting functions for better managerial decisions.



Scheduling planned maintenance tasks has never been easier. Fast Track PPM has been created with end-users in mind and the user-friendly interface and system Wizards make it one of the leading packages available today. Users can create maintenance processes in seconds and PPM work dates are set out in a graphical view to help quickly determine patterns and clashes.



Work dates in graphical view can be filtered by: Building, Assets, Process and Date Range.

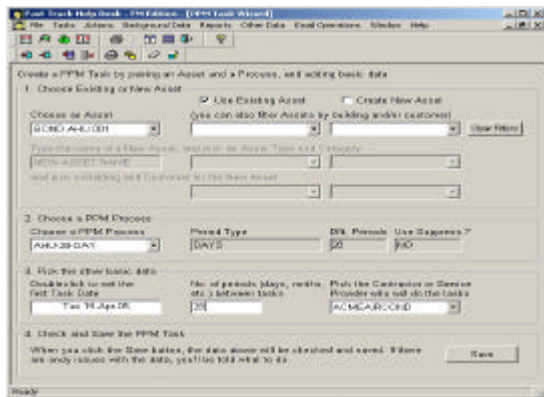
Using these filters users can Zoom in to parts of the PPM plan and fine tune the work dates.

Create the perfect maintenance plan and keep control over PPM processes, including the suppression and timing of individual jobs.

The Graphic Dates view shows work detail and allows date adjustment. Dark colours indicate no job assigned, bright colours have jobs. Red indicates public holiday.

Fast Track Maintenance

Our Fast Track Planned Preventative Maintenance software includes a customisable help section. The software will give different help items depending on where you are within the system. New help items can be added as and when needed, allowing the help section to grow along with the system. All information held in the help section can be printed off as a separate booklet to act as a manual for users and enable them to use your software in the manner you wish.

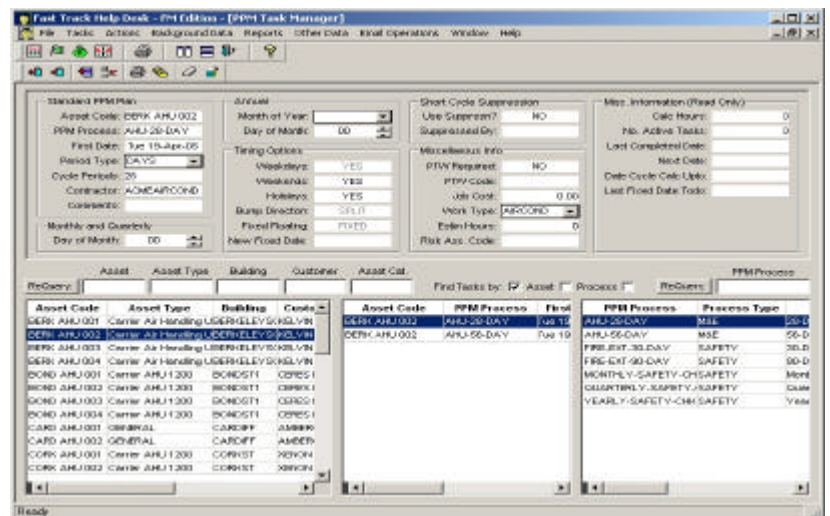


The PPM Task Wizard allows new tasks to be set up in seconds. Work dates and conflicts immediately appear in the PPM Graphics Dates

Advanced Invoicing

Calculates the total cost of the job, including parts and labour. Statistics on costs and invoices are held and updated

The PPM Task Manager provides for sophisticated interval management, including suppression of coinciding dates (monthly suppressed by quarterly, etc) and automatic avoidance of weekends and public holidays.



Monitoring

Maintenance tasks are copied to the Work Monitoring section. By updating the status of a job, work orders can easily be filtered to view all jobs of a certain type.

Automatic Issuing

Print work Orders and automatically email them to employees and contractors. Attachments can be added to emails such as Maintenance Manuals and Health and Safety Guidelines.

Parts and Labour, Stock Control

Contains record of all parts used on a job and where they were obtained. Stock levels and inventory levels are automatically updated. Purchase Orders can also be raised/printed for parts



27 Breakfield
Ullswater Business Park
Coulsdon
CR5 2HS
Phone: 0845 299 0231
Fax: 0709 238 6032
E-mail: enquiries@fmdirect.co.uk